



# St Luke's Church of England School Newsletter

*Educating through faith, hope and love.*

Dear Parents and Carers,

I hope you all survived the heatwave over the half term break and managed to get some well deserved rest. We had a fantastic end to the half term with our 'School Disco'. The children had a great time and I hope you did too. Thank you to our wonderful PFA members for organising this fun event. After all the costs were taken out we even managed to make a profit of £167. I know there were some glitches with the payment system so if you think your ticket payment may not have gone through, please contact [pfa@stlukesschool.org.uk](mailto:pfa@stlukesschool.org.uk)

This week we have had our Prayer Space set up in the library. This year's theme has been "Stewards of God's Wonderful World" and the children took part in activities such as making rules for a new earth, watching a video of local wildlife and making windmills – all as a starting point for their reflections on how we can look after God's creation.

Next week, we will be holding our annual Sports Day at Parliament Hill running track on Hampstead Heath. We hope that you will all be there to cheer your child on and please remember that KS1 and EYFS children can be collected at 2:00 and KS2 children at 3:30 from the track. A map will be sent home with more information next week to remind parents where to meet us.

Finally, we had our SIAMs Inspection call this week. On Thursday 11th June an inspector will come to spend the day with us and look at how the school's Christian vision helps our whole community to flourish. A letter with more information will be coming home with your child today.

Wishing you all a restful weekend,

Ms J Iwanicki  
Headteacher

*John 10:10 "But I came to give life—life in all its fullness.."*

## Spring Class



This week in Spring Class, we talked about what makes a superhero and where we might find them. We discussed real-life superheroes and the important ways they help others. It was lovely to hear the children's thoughts about who their superheroes are and why they are special to them. We read Superhero Mum and discussed the different characters in the story. We have also been practising for our first Sports Day and have enjoyed taking part in a range of activities. This week, our library was transformed into a prayer space. The children took turns to visit and explore the different areas. They enjoyed taking part in a variety of activities and spending time reflecting and responding to what they experienced.



## Summer Class



This week in Summer class, we got to visit the wonderful prayer space in the school library. We reflected on God's wonderful world and how we can take care of it. It was great to hear the children's thoughtful responses and ideas. In RE, we explored why different groups of people like to belong to the church community. We have been getting ready for sports day by practising different activities. In English this week, we read No Thank You and I Will Not Ever Never Eat a Tomato and learned how to write instructions and commands. We have also been getting ready for our class assembly next week, we can't wait to see you there.



## Autumn Class



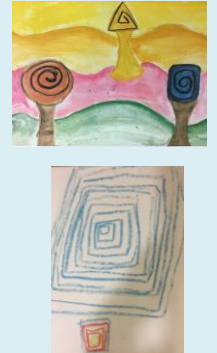
This week in Autumn Class, we have been working on questioning and clarifying skills in English using our reading of 'Stitch Head' by Guy Bass. The class also considered the characters and setting of the story, and used evidence from the book to justify their answers to questions about the main character. In Maths, we have started to review our learning this year with a focus on number and subtraction. In topic we found out more about changes that were brought about in Britain by the Roman invasion. In Computing, we looked in more detail at the functions of keys on the computer keyboard, and practised our touch typing skills. In PE, tennis skills and playground games were the main focus of learning.



## Winter Class



This week in Winter Class, we have been revising fractions, including finding equivalent fractions and converting mixed numbers into improper fractions. In English, we have begun reading our new play scripts and have been discussing different stage positions and directions to help us understand how plays are performed. In Science, we have been learning about the human heart, exploring its function and understanding how this vital organ works within the body. We have also enjoyed exploring the Prayer Space this week. The children engaged thoughtfully with the activities and wrote reflective responses, demonstrating maturity and creativity in their reflections.



# Golden Book

### Spring Class

**Nikos** for confidently recalling number bonds to 10.

**Raya** for always following our Golden Rules, making positive choices, and being a fantastic role model.

### Summer Class

**Anna** for being a responsible and caring member of our class.

**Laura** for her excellent work writing bossy commands in English.

### Autumn Class

**Peransa** for a positive attitude to learning this week.

**Roman** for sharing his knowledge of written subtraction methods.

### Winter Class

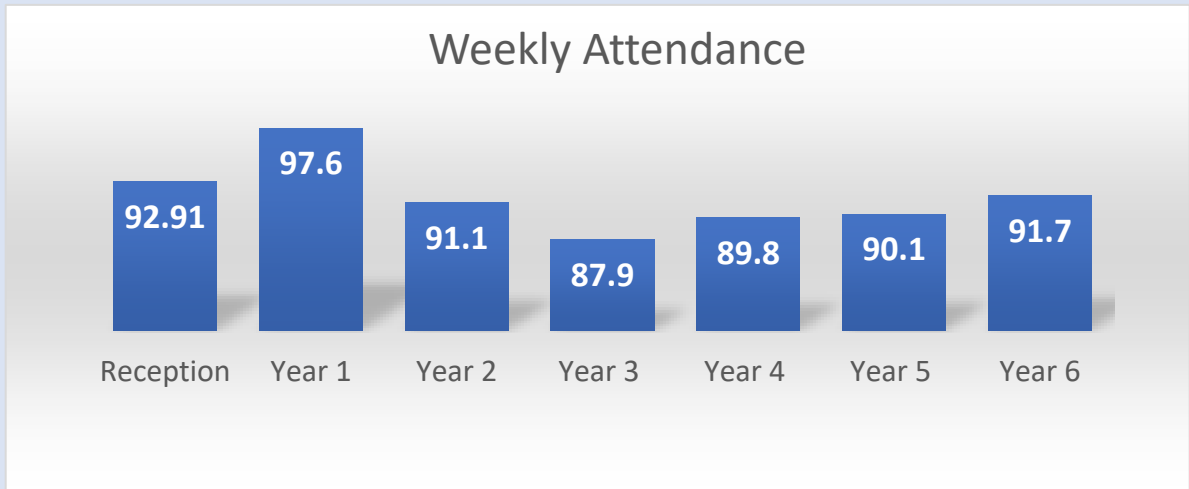
**Husaam** for his fantastic artwork inspired by Friedrich Hundertwasser.

**Leena** for your thoughtful, reflective responses to the prayer room activities.



# School Disco

# Weekly Attendance



Year 2  
With 97.6%  
Achieved the highest attendance



## Happy Birthday



Reception Class - Hana  
Autumn Class - Ezekiel

# Dates for Diary 2026

Term dates are on the school website. Additions are in **blue**; Changes are in **red**.

<del>13<sup>th</sup> April</del>	<del>Start of Term</del>
<del>W/c 13<sup>th</sup> April</del>	<del>No After School Clubs this week</del>
<del>Tues 21<sup>st</sup> April</del>	<del>School Swimming Lesson Start for Year 3 &amp; 4</del>
<del>W/c 20<sup>th</sup> April</del>	<del>After School Clubs Start</del>
<del>22<sup>nd</sup> April</del>	<del>Start of term service</del>
<del>4<sup>th</sup> May</del>	<del>Bank Holiday</del>
<del>5<sup>th</sup> May</del>	<del>Whole School Photograph</del>
<del>11<sup>th</sup> – 15<sup>th</sup> May</del>	<del>KS2 SATs Week and Year 6 Breakfast Club</del>
<del>11<sup>th</sup> May</del>	<del>Reception Trip to St Johns Church, Hampstead</del>
<del>18<sup>th</sup> May</del>	<del>Reception Trip to Regents Park Mosque</del>
<del>19<sup>th</sup> May</del>	<del>Reception Assembly at 3pm</del>
<del>20<sup>th</sup> May</del>	<del>The Silver Trail</del>
<del>22<sup>nd</sup> May</del>	<del>St Luke's CE School Disco</del>
<del>_____</del>	<del>KS1 4.30 – 5.30pm</del>
<del>_____</del>	<del>KS2 5.30 – 6.30pm</del>
<del>25<sup>th</sup> – 29<sup>th</sup> May</del>	<del>Half Term Break</del>
<del>1<sup>st</sup> June</del>	<del>INSET Day</del>
<del>2<sup>nd</sup> – 5<sup>th</sup> June</del>	<del>Start of term for the children</del>
<del>2<sup>nd</sup> June</del>	<del>Prayer Space in the Library</del>
<del>10<sup>th</sup> June</del>	<del>Sports Day at Hampstead Heath</del>
<del>24<sup>th</sup> June</del>	<del>Evergreens Tea</del>
<del>27<sup>th</sup> June</del>	<del>Summer Fair</del>
<del>8<sup>th</sup> July</del>	<del>End of Year Production TBC</del>
<del>15<sup>th</sup> July</del>	<del>Year 6 Leavers Service</del>
<del>17<sup>th</sup> July</del>	<del>End of Term 1:30pm</del>

# Give your child the best start in life – every school day counts.



At St Luke's we believe that all children deserve an education of the highest quality in order to flourish and enjoy a life filled with meaning and purpose. To support us with this, we ask parents to ensure their children are in school and on time every day. The school gates are open at 8:50am and children should be in their classrooms to be registered at 9:00am. The latest statutory guidance for schools, **Keeping Children Safe in Education 2024**, has a specific paragraph addressing children who are absent from school.

## ***Children who are absent from education***

*175. Children being absent from education for prolonged periods and/or on repeat occasions can act as a vital warning sign to a range of safeguarding issues including neglect, child ... exploitation - particularly county lines. It is important the school or college's response to persistently absent pupils and children missing education supports identifying such abuse, and in the case of absent pupils, helps prevent the risk of them becoming a child missing education in the future. This includes when problems are first emerging but also where children are already known to local authority children's social care and need a social worker (such as a child who is a child in need or who has a child protection plan, or is a looked after child), where being absent from education may increase known safeguarding risks within the family or in the community.*

Our **whole school attendance target is 96%** which allows for 8 days of illness over the year.

100% Attendance	0 Days Missed
95% Attendance	9 Days of Absence 1 Week and 4 Days of Learning Missed
90% Attendance	19 Days of Absence 3 Weeks and 4 Days of Learning Missed
85% Attendance	28 Days of Absence 5 Weeks and 3 Days of Learning Missed
80% Attendance	38 Days of Absence 7 Weeks and 3 Days of Learning Missed
75% Attendance	46 Days of Absence 9 weeks and 1 Day of Learning Missed

# Family Ceilidh

SCOTTISH DANCING, LIVE MUSIC, DRINKS, NIBBLES, AND A SHORT TALK ABOUT THE CHRISTIAN FAITH. ALL WELCOME!



---

FRIDAY 19<sup>TH</sup> JUNE | 7PM - 9PM

ST. LUKE'S CHURCH, KIDDERPORE AVE.

---

Soft drinks will be sold on the night. please bring your own alcoholic drink if you wish.

Adults £10 | Kids £5 | Families £20

Scan QR code to book:



